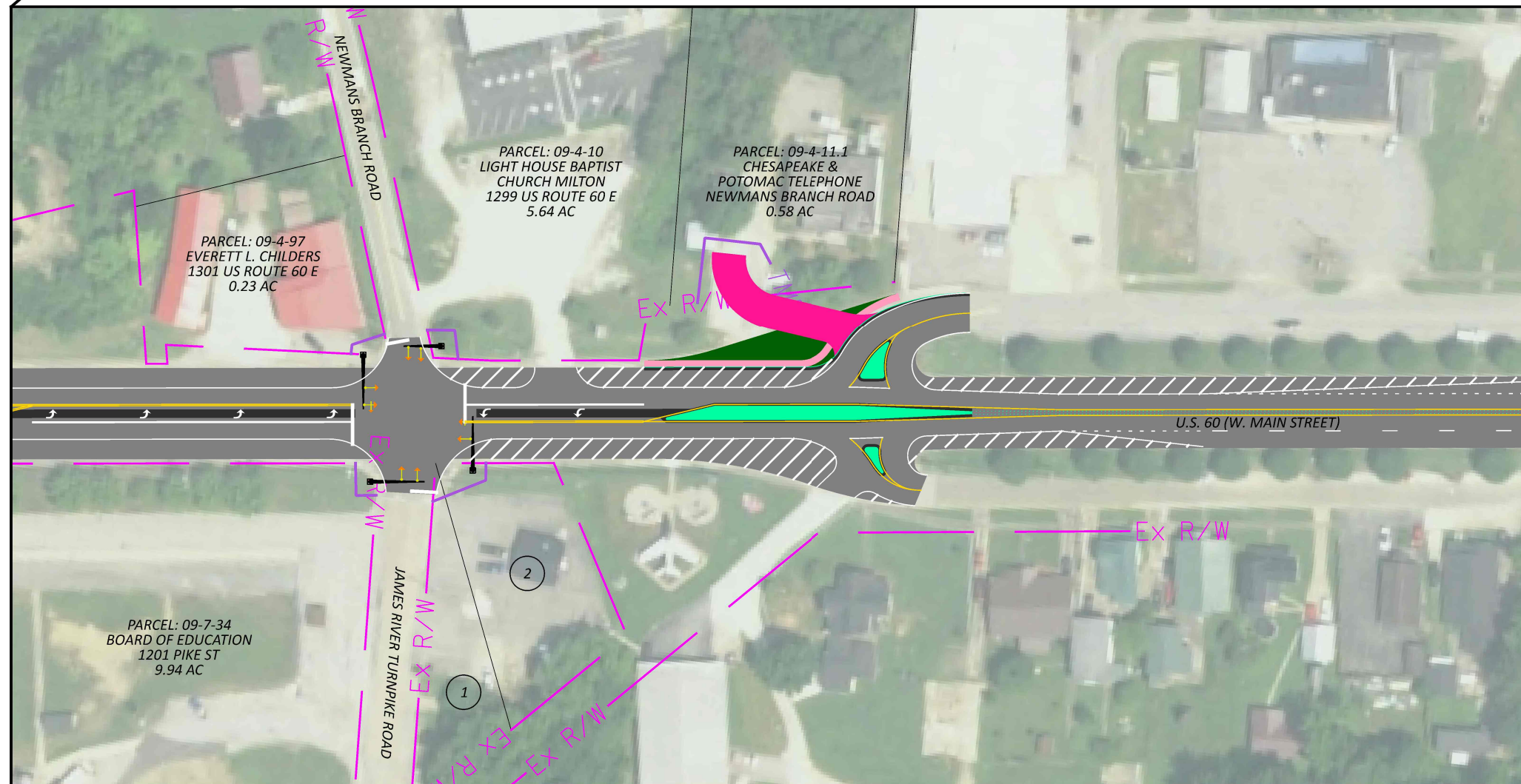


NEWMANS BRANCH ROAD TRAFFIC STUDY
TRAFFIC SIGNAL IMPROVEMENT

- 1
PARCEL: 09-7-34
BOARD OF EDUCATION
1201 PIKE ST
9.94 AC
- 2
PARCEL: 09-7-1
SHAFFER REALTY LLC
1226 W MAIN ST
0.32 AC



LEGEND

- ASPHALT PAVEMENT
- TRUCK APRON
- EXISTING PAVEMENT TO REMAIN
- CONCRETE CURB/TRAFFIC ISLAND
- DRIVEWAY
- LANDSCAPED AREA
- EXISTING R/W
- PROPOSED R/W

DESIGN AGENCY



DESIGNER	DMG
REVIEWER	BAA
PROJECT ID	12-22-23
SHEET	0
TOTAL	3